



# ELPI<sup>®</sup>+ Maintenance and Calibration Services

ELPI<sup>®</sup>+ Maintenance and Calibration Services ensure reliable and accurate operation of your measurement instrument. Proper instrument maintenance extends the lifetime of the instrument and helps minimize instrument failures and possible downtime.

## ELPI<sup>®</sup>+ / HT-ELPI<sup>®</sup>+ / HR-ELPI<sup>®</sup>+ Maintenance Service

### EVERY 2 YEARS

ELPI<sup>®</sup>+ maintenance service is a one-day service where the instrument is thoroughly overhauled. After the maintenance, the instrument operation is verified to ensure that the ELPI<sup>®</sup>+ is operating reliably and according to manufacturer's specifications. This service is provided by your local, authorized Dekati representative. Includes:

- Replacement of wear parts
- Complete instrument overhaul
- Operation verification
- Service certificate

ES-1300	ELPI <sup>®</sup> + Maintenance Service
ES-1302	HR-ELPI <sup>®</sup> + Maintenance Service
ES-1304	HT-ELPI <sup>®</sup> + Maintenance Service

## ELPI<sup>®</sup>+ / HT-ELPI<sup>®</sup>+ / HR-ELPI<sup>®</sup>+ Calibration Service

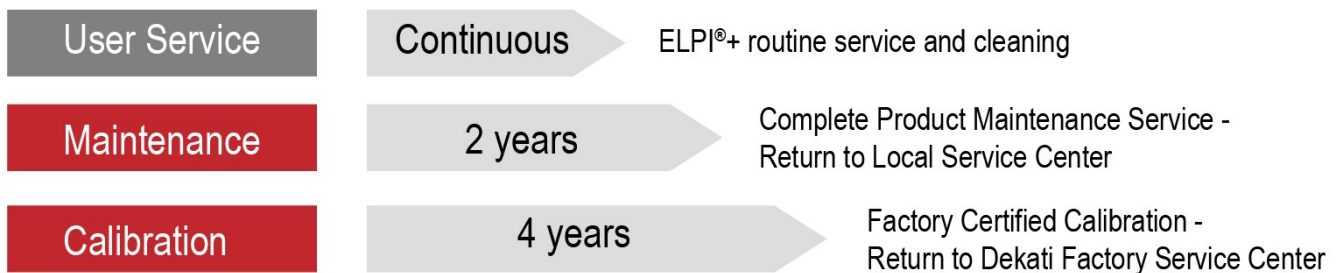
### EVERY 4 YEARS

ELPI<sup>®</sup>+ factory certified calibration service is a complete maintenance and calibration service performed at Dekati factory. In addition to the maintenance service, this service includes re-calibration of the electronics, the impactor and the charger, and a reference test against a reference instrument. A complete report and calibration certificate are also provided. Includes:

- Arrival condition test measurement (optional)
- ELPI<sup>®</sup>+ Maintenance Service
- Factory calibration
- Reference measurement test
- Service report and a calibration certificate

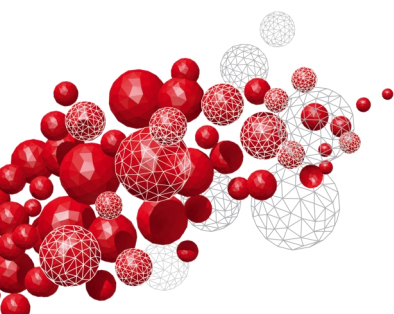
ES-1000	ELPI <sup>®</sup> + Full Calibration Service
ES-1001	ELPI <sup>®</sup> + Standard Calibration Service
ES-1002	HR-ELPI <sup>®</sup> + Full Calibration Service
ES-1003	HR-ELPI <sup>®</sup> + Standard Calibration Service
ES-1004	HT-ELPI <sup>®</sup> + Full Calibration Service
ES-1005	HT-ELPI <sup>®</sup> + Standard Calibration Service

## Maintenance Cycle of Dekati<sup>®</sup> ELPI<sup>®</sup>+ Products



## Upgrade your ELPI<sup>®</sup>+ during service

- Upgrade to High Resolution ELPI<sup>®</sup>+ to get particle size distribution in up to 500 size channels
- Upgrade to High Temperature ELPI<sup>®</sup>+ to sample up to 180 °C aerosol directly into ELPI<sup>®</sup>+
- Sintered metal collection plates to prolong cleaning intervals



Dekati Ltd. ▶ Tykkitie 1 FI-36240 Kangasala, Finland ▶

Tel. int +358 3 3578 100 ▶ E-mail sales@dekati.fi ▶ [www.dekati.fi](http://www.dekati.fi)